

# Santa Monica Mountains NRA

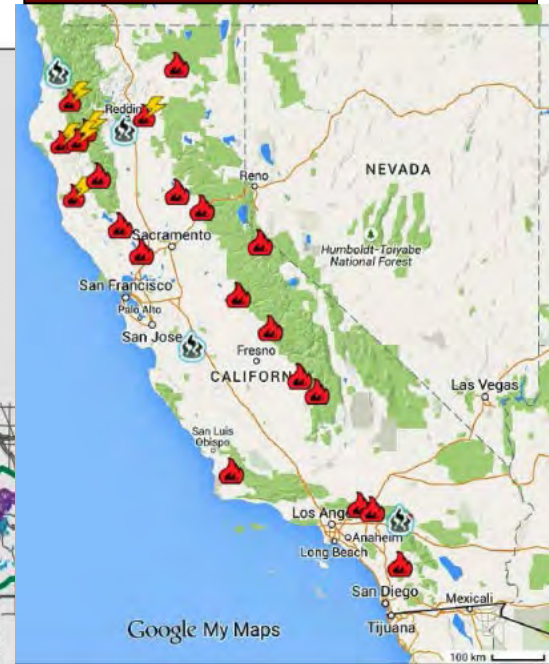
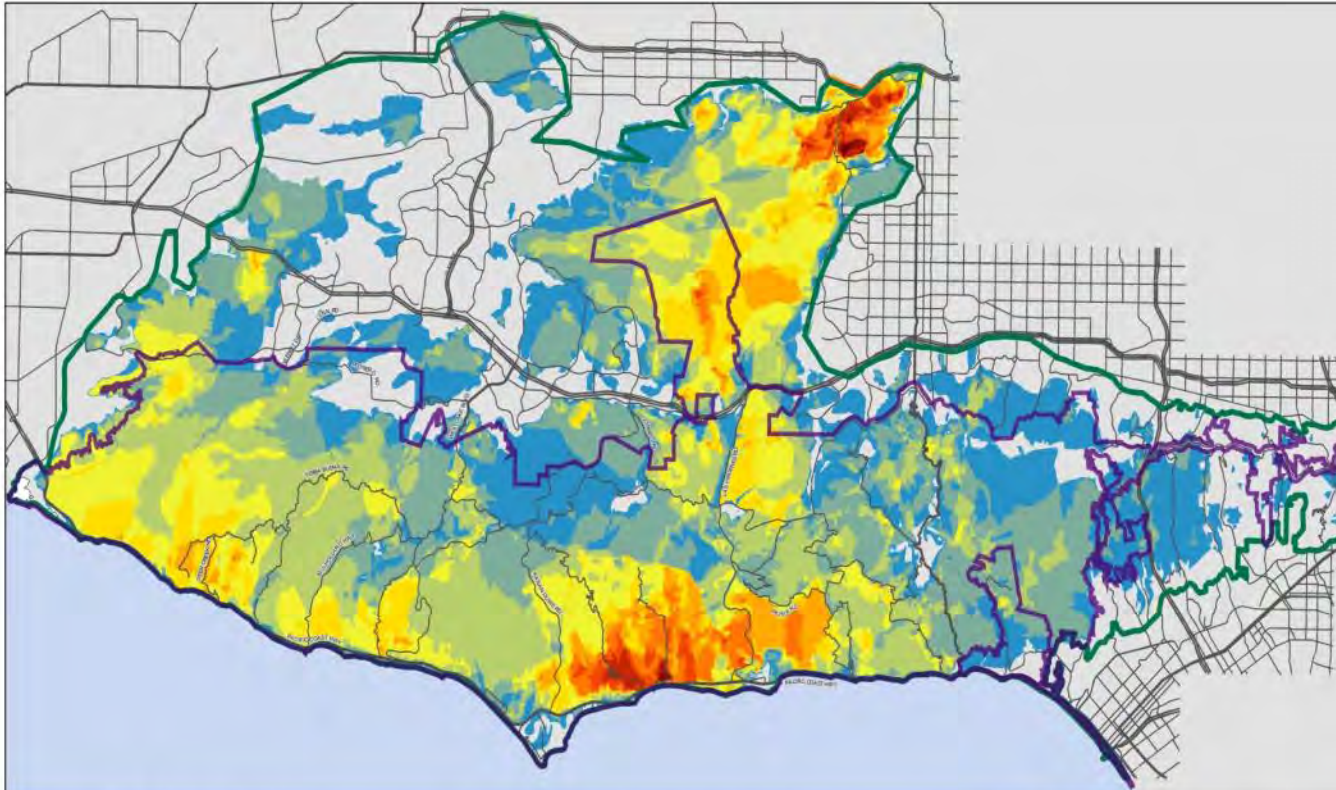


## Fire Science for California Conservation

Marti Witter, Mediterranean Coast Network Fire Ecologist

# The Need




## 2015 California Fires



### Fire frequency in the greater Santa Monica Mountains area

Year of last fire based on fire history data from NPS-SAMO and CAL FIRE-FRAP fire history databases, current through 2012.

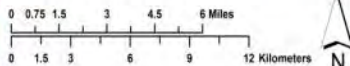
### Number of fires (fire frequency, 1925 through 2013)

-  boundary- Santa Monica Mountains National Recreation Area
-  Mountain zone (vegetation map extent)
-  major roads

 1 (88 years)	 5 (18 years)	 9 (10 years)
 2 (44 years)	 6 (15 years)	 10 (9 years)
 3 (29 years)	 7 (13 years)	 11 (8 years)
 4 (22 years)	 8 (11 years)	



Map by NPS-SAMO Fire GIS, 8/4/2013  
Scale 1:185,000 1 inch = 3 miles



# Case Study: Postfire Seeding and Mulching

## LA County Postfire Seeding SMM's

1993 Old Topanga

1996 Calabasas

2001 Pacific Coast

2005 Topanga

2007 Malibu Road

2007 Canyon

2007 Corral

2013 Springs



LA City 2007 Griffith Park Fire: Straw Hydromulch



2014 King Fire: "Weed-free" Rice Straw

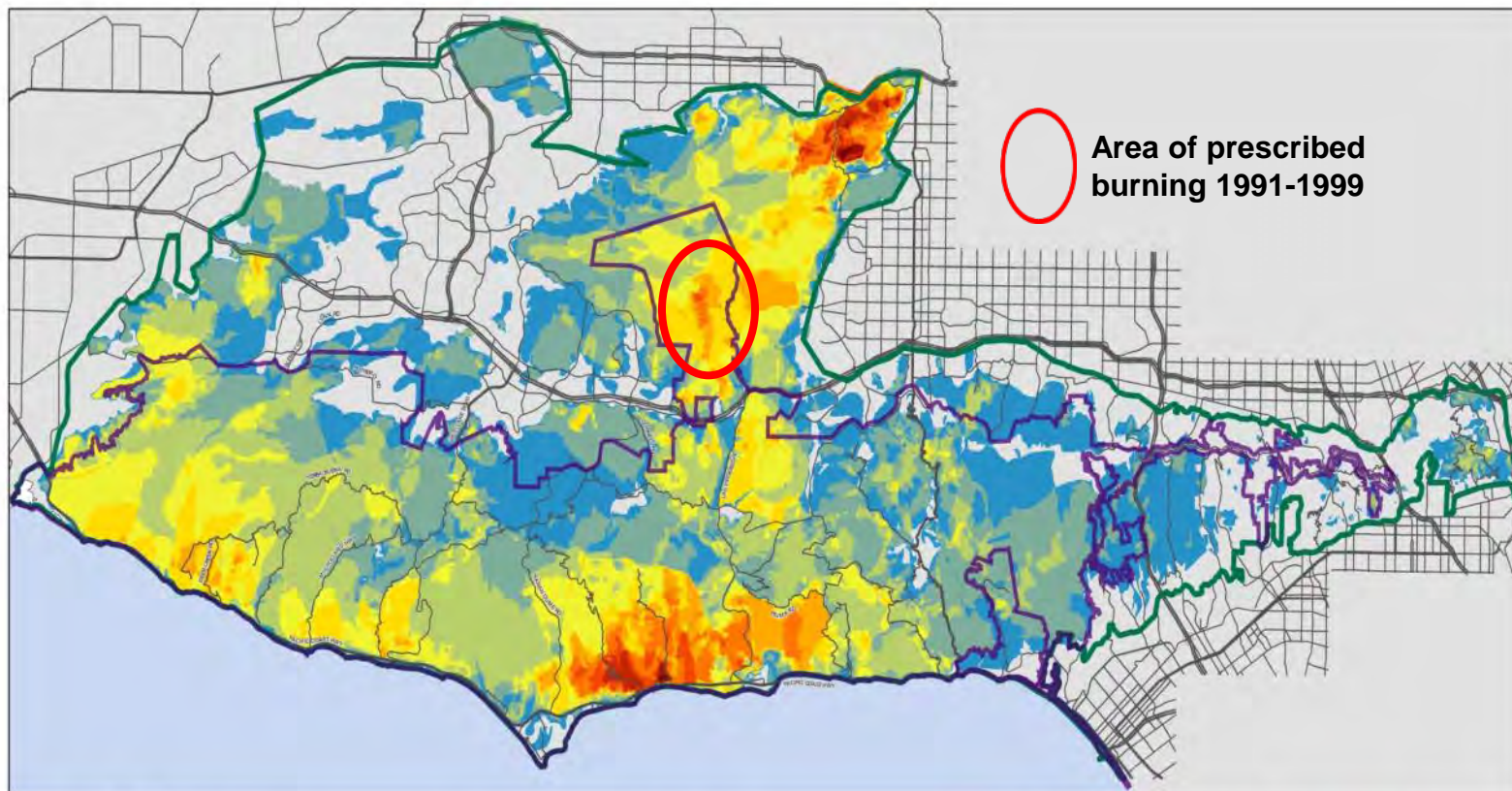
# Case Study: Postfire Seeding and Mulching



**Nov 30, 2014: Pacific Coast Highway closed for 3 months between Ventura and Malibu**

**2014 post-fire Camarillo Springs mud flow**

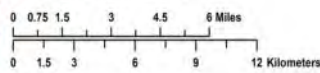
# Case Study: Prescribed Burning



Area of prescribed burning 1991-1999

## Fire frequency in the greater Santa Monica Mountains area

Map by NPS-SAMO Fire GIS, 8/4/2013  
Scale 1:185,000 1 inch = 3 miles



Year of last fire based on fire history data from NPS-SAMO and CAL FIRE-FRAP fire history databases, current through 2012.

- boundary- Santa Monica Mountains National Recreation Area
- Mountain zone (vegetation map extent)
- major roads

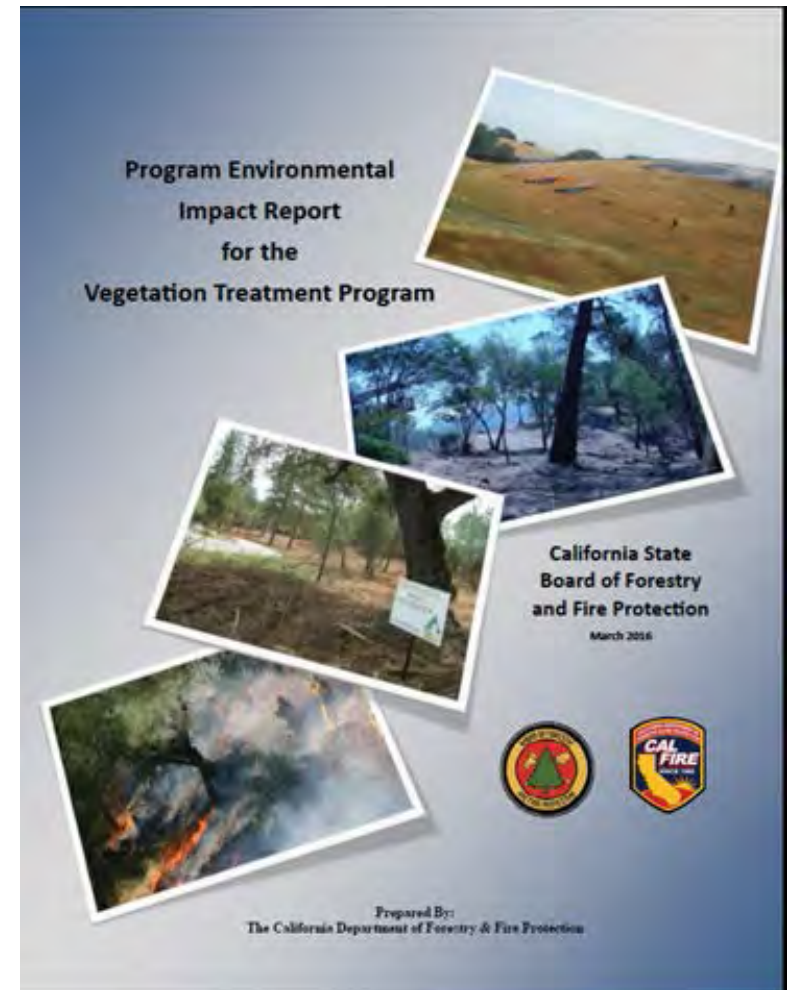
## Number of fires (fire frequency, 1925 through 2013)

1 (88 years)	5 (18 years)	9 (10 years)
2 (44 years)	6 (15 years)	10 (9 years)
3 (29 years)	7 (13 years)	11 (8 years)
4 (22 years)	8 (11 years)	

# Case Study: From the House Out



**Santa Monica Mountains  
CWPP Community Meeting 2010  
J Lopez, LA County Forestry and Fire Protection**



**CalFire Vegetation Treatment Program  
PEIS 2015**

# Problem Solved - NOT

VOL. 38, NO. 2 AND VOL. 38, NO. 3 • APRIL 2010 AND JULY 2010

## FREMONTIA

JOURNAL OF THE CALIFORNIA NATIVE PLANT SOCIETY



SPECIAL ISSUE:  
NATIVE PLANTS AND FIRE SAFETY





CALIFORNIA  
FIRE SCIENCE  
CONSORTIUM

A JFSP KNOWLEDGE EXCHANGE CONSORTIUM



# Science Knowledge Exchange



Synthesize local fire science and encourage **collaboration** between fire researchers, land managers, and stakeholders.

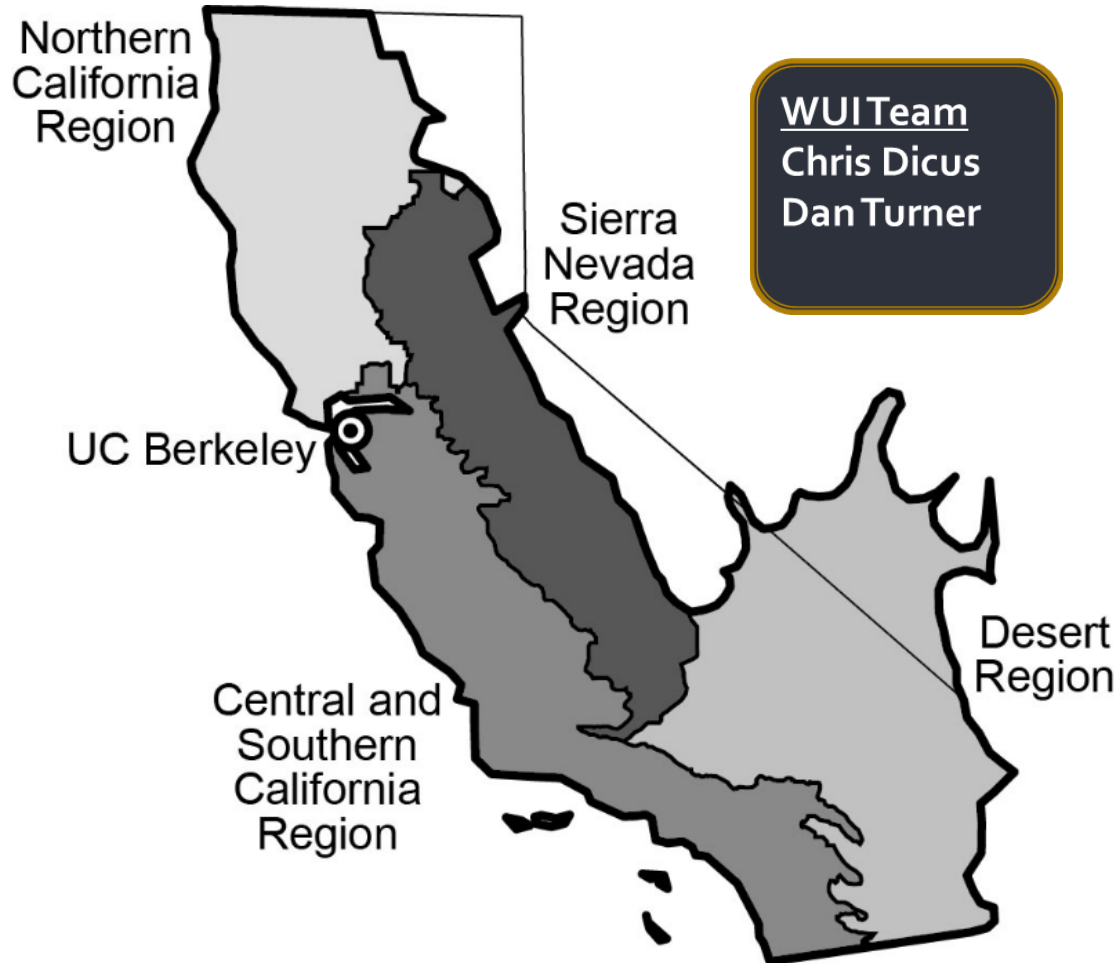




# CALIFORNIA FIRE SCIENCE CONSORTIUM



A JFSP KNOWLEDGE EXCHANGE CONSORTIUM



Accelerate the **AWARENESS, UNDERSTANDING, and ADOPTION** of wildland fire science information by federal, tribal, state, local, and private stakeholders within **ecologically similar regions.**



# CALIFORNIA FIRE SCIENCE CONSORTIUM



A JFSP KNOWLEDGE EXCHANGE CONSORTIUM

## Program Environmental Impact Report for the Vegetation Treatment Program



California State Board of Forestry and Fire Protection  
March 2016



Prepared By:  
The California Department of Forestry & Fire Protection

[Blog](#) [Contact](#) [FireScience.gov](#)



# California Fire Science Consortium

JFSP FIRE SCIENCE EXCHANGE NETWORK

- [Events & Webinars](#)
- [Research & Publications](#)
- [Partners & Tools](#)
- [Regions](#)
- [Community](#)
- [About](#)

## Research & Publications

Narrow by...

Search

### Topics & regions

- [Central & Southern California \(147\)](#)
- [Climate & Fire \(20\)](#)
- [Fire & Traditional Knowledge \(24\)](#)
- [Fire Behavior & Weather](#)

**Panel Review of the California Board of Forestry and Fire Protection's Draft Vegetation Treatment Plan Environmental Impact Report (VTPEIR)**

The California Fire Science Consortium coordinated the Panel Review of the California Board of Forestry and Fire Protection's Draft Vegetation Treatment Plan Environmental Impact Report (VTPEIR). The report from this review is available here.

[Download PDF >](#)

- [Technical Report](#)
- [Fire Policy](#)

0 Likes [Share](#)



CALIFORNIA  
FIRE SCIENCE  
CONSORTIUM

A JFSP KNOWLEDGE EXCHANGE CONSORTIUM



Activities and products often focus on information transfer to land agency fire managers

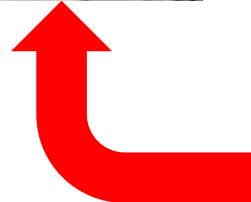
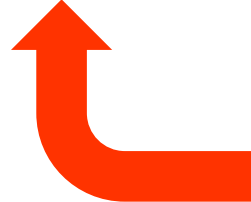
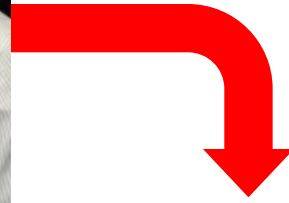


CALIFORNIA  
FIRE SCIENCE  
CONSORTIUM

A JFSP KNOWLEDGE EXCHANGE CONSORTIUM



**Planners - a natural bridge between science and fire management**





# CALIFORNIA FIRE SCIENCE CONSORTIUM



A JFSP KNOWLEDGE EXCHANGE CONSORTIUM



The Law of Diffusion of Technology



# CALIFORNIA FIRE SCIENCE CONSORTIUM



A JFSP KNOWLEDGE EXCHANGE CONSORTIUM

## California Fire Science Consortium

JFSP FIRE SCIENCE EXCHANGE NETWORK

- Events & Webinars
- Research & Publications
- Partners & Tools
- Regions
- Community
- About

### CA Fire Science Consortium Monthly Newsletter

[View Newsletter Archive >](#)

#### Email List Signup

Our monthly email newsletter contains information on new science resources and upcoming events. We care about your input, and every other year we send out an email asking for feedback on our efforts.

Your privacy is important. Your contact information is never shared, and you can remove yourself at any time.

Email address \*

Name \*

First Name

Last Name



THE CFSC IS DIVIDED INTO 4 GEOGRAPHIC REGIONS AND 1 STATEWIDE WILDLAND-URBAN INTERFACE REGION

#### Need to reach someone?

Stacey Sargent Frederick  
510-642-4934  
[sssfrederick@berkeley.edu](mailto:sssfrederick@berkeley.edu)

#### Directory of Experts

Contact information for fire science contacts in our region.

#### Staff & State Advisory Board

Here's a virtual 'Hello' from all of us. Feel free to contact us - we're here to help.

# Register!

## www.cafiresci.org